



مركز القدس للنساء

JERUSALEM CENTER FOR WOMAN

MONITORING JERUSALEM

KEY FACTS: Palestinian and Jordanian authorities expressed grave concern regarding a **possible collapse of the Al-Aqsa Mosque**. Arrests and deportations of peace activists continued this month. The Israeli budget for house demolitions has reached USD 2,000,000.

House Demolitions

The West Jerusalem municipality **disclosed plans to demolish 312 Palestinian homes in Silwan and other neighborhoods** of occupied East Jerusalem on January 2nd.

The Palestinian Ministry of Information reported on January 6th that **Israel demolished over 23,000 Palestinian homes since 1967**. 700 of these demolitions took place in East Jerusalem in the past 9 years.

On January 7th, Khaled Abu-Shosha **tore down his own home** in the Al Tur neighborhood of East Jerusalem. Self-demolitions are a way to avoid the heavy fines due to the West Jerusalem municipality after a military demolition. **Five children and two adults were displaced**.

The Wadi Helweh Information Center reported on Jan 13th that 70% of the Wadi area is now targeted for construction of parking lots and passageways, or designated as open land areas. According to the center, half of the 620 homes in the Wadi area are threatened with demolition.

Only Palestinian homes are affected - according to West Jerusalem municipality plans, **Israeli settlements in the area will remain untouched**. Town Plan Scheme 11555 also categorizes the Wadi area as an "A" zone and provides for taxes to be increased to an unaffordable level for the Palestinian residents. **Until 1990 not a single Israeli Jew lived in Wadi Helweh, while as of April 2009, settlers controlled about one quarter of the Wadi's land**.

Haroon Burqan, a father of 7, tore down two rooms belonging to his own home and one barrack sheltering his animals in Wadi Yasool, Silwan on Jan. 16th. Burqan avoided the cost of a military demolition, but he was still ordered to pay 50,000 NIS in fines for building the structures without a permit. Since 2006 the Jerusalem municipality has planned to confiscate 2,240 dunams in Wadi Yasool, **displacing Palestinians to build housing and infrastructure for Jews only**.



An artificial lake waiting to be filled on the slopes of the illegal settlement of Ma'ale Adummim in east Jerusalem. Settlements are kept as green and lush as possible in the semi-desert climate of the central West Bank. Palestinians often run out of water in the summer, and use water tanks as back up. Settlers need no tanks, as they have a constant supply of water: they consume 5 times as much water per capita as the average Palestinian.

Israel demolished an **Al Quds University building** in the Jerusalem neighborhood of Beit Hanina on Jan 19th **to pave a bypass** road linking the illegal Israeli settlements of Neve-Yaqoov and Pizgat Zeev in occupied East Jerusalem with road 443, the main highway connecting the settlement of Modi'in with Jerusalem and Tel Aviv.

Israeli authorities demolished a non-residential building belonging to Shadi Al-Salameh in the Aza'ayem neighborhood of East Jerusalem on January 22nd. **Demolition of non-residential buildings, such as animal pens or small businesses** has a devastating impact on the livelihoods of Palestinians in East Jerusalem.

The Palestinian Authority has been pressuring Israeli representatives this month to freeze East Jerusalem settlements for 3 to 6 months, in order to aid resumption of negotiations. **Israel has continued to refuse to freeze settlement construction in East Jerusalem and has also continued building in the West Bank.**

The West Jerusalem municipality **handed notices to demolish 5 more homes in the neighborhood of Silwan** on January 20th under the usual pretext of lack of building permits.

To date, there are around **22,000 pending demolition orders** in East Jerusalem alone. For **2010 the Israeli municipality has doubled its budget for house demolitions. The budget has reached USD 2,000,000.**

House Evictions

Israeli settlers occupied the home of 80-year-old Fatima Dahoody and changed her locks on January 29th. The elderly Palestinian, who has owned her home in the Old City since the early 1990s, was staying with her son in the Jerusalem neighborhood of Beit Hanina at the time of the takeover. Earlier this month **an Israeli court order barred Dahoody from entering and granted Israeli settlers partial access to her home.** By the same court decision, **Dahoody will be imprisoned if she tries to enter her home and fined NIS 20,000 (USD 5,350).** Dahoody was already forced to pay NIS 9,000 (USD 2,400) to cover the settlers' legal fees. Settlers initiated legal actions after they unsuccessfully tried to take over Dahoody's home in November 2009.

An Israeli court ruled on January 31st on the **eviction, by March 21st, of Palestinian residents from a multi-family home in the Old City, which is slated for demolition.**

"THIS IS NOT GOING TO HAPPEN: IT GOES AGAINST EVERYTHING NETANYAHU SAYS AND BELIEVES IN."

SOURCE AT THE PRIME MINISTER'S OFFICE ON THE POSSIBILITY OF EVEN A SYMBOLIC FREEZE OF SETTLEMENT ACTIVITIES IN EAST JERUSALEM

Police confiscated an M-16 automatic rifle from one of the settlers occupying the Al-Ghawi's family home in Sheikh Jarrah after he cocked the gun and threatened to fire at the family and supporters gathered outside on January 31st. **The Al-Ghawi's have been living in the street in front of their home ever since they were evicted in August 2009.**

"TWENTY YEARS AGO, JERUSALEM WAS 70% JEWISH AND 30% ARAB, WHICH IS THE GOVERNMENT'S GOAL. TODAY, THE RELATION IS AROUND 65% TO 35%, WHICH CONSTITUTES A STRATEGIC THREAT TO JERUSALEM."

JERUSALEM MAYOR NIR BARKAT

East Jerusalem was occupied and illegally annexed by Israel in 1967. According to the IV Geneva Convention on the protection of civilians in time of war it is illegal for the occupying power to transfer the occupied population out of or its own population into the occupied area.

Residency Permits

The Jerusalem Centre for Social and Economic Rights (JCSER) warned on Jan. 10th that **over 125,000 Palestinian residents of Jerusalem could eventually be stripped of their Jerusalem I.D. and consequently of their right to live in the city.** On Jan 8th Yakir Segev, responsible for East Jerusalem in the West Jerusalem municipality, declared that the Palestinian neighborhoods east of the Apartheid Wall, where 55,000 Palestinians with Jerusalem I.D.'s reside, are "no longer part of the city."

Anxiety remains for the future of these residents, who **receive no services from the Israeli authorities but cannot receive services from the Palestinian Authority (PA) either. The PA is barred from accessing areas adjacent to the Apartheid Wall.** Jerusalem I.D. holders are not considered Israeli citizens but so far maintain access to their capital without the need for additional Israeli-issued permits, which are required for every other Palestinian.

Jerusalem-born Elias Khayyo was arrested at the Qalandiya checkpoint, the main entry point into Jerusalem from the north of the West Bank, on Jan. 10th.

He has been in detention since then, **awaiting deportation to the US because Israeli authorities claim he spent more than 7 years in the US, which voids his residency in Jerusalem.** Whether he will be allowed entry upon deportation is unclear, as he's neither a US citizen, nor a US Green Card holder. After the illegal Israeli annexation of East Jerusalem in 1967, Israel accorded "resident" status to Palestinians living in Jerusalem, but has been revoking it to anyone not able to prove that their "center of life" continuously revolves around the city. **No such law applies to Jewish residents.**

Anti-Palestinian Arrests and Policies

Israeli forces stormed the home of Samir Abu Farha on Jan. 13th to detain his son, Mu'tasem, 23, and search for weapons. **Mu'tasem is a taxi driver who refused to work around the area of an Israeli excavation site near the Al-Aqsa Mosque, because the excavation damages Palestinian infrastructure.**

Israeli forces **detained Al Quds University political science lecturer Sa'eed Yaqin** on Jan. 14th. They broke into his home at dawn in the village of Beit Duqu, north-west Jerusalem, forced the family out and searched the premises. **No reasons for Yaqin's detention were presented.**



A wide, well maintained highway connecting illegal Israeli settlements in East Jerusalem, as seen from the settlement of Pisgat Zeev, coming from the settlement of French Hill. Expanding Jewish-only infrastructure in the Palestinian occupied territory is an essential factor in the Israeli matrix of control of the land.

17 peace activists were arrested on Jan. 15th during a **weekly protest** in the neighborhood of Sheikh Jarrah against evictions of Palestinians to make space for Israeli settlers. **Among them was the CEO of the Association for Civil Rights in Israel (ACRI) and the director of Rabbis for Human Rights.** All seventeen were released after the **Magistrate Court in Jerusalem ruled there were no legal grounds for the arrests.**

20 peace activists were again arrested the following Friday during the weekly peaceful demonstration in the neighborhood of Sheikh Jarrah. **Among them was Yossi Sarid, former head of the Israeli Meretz Party.**

The Israeli newspaper Haaretz this month published the story of Muamman Abu Kwaik, a **quadriplegic Palestinian boy with cerebral palsy.** Muamman is forced to **travel 3 hours each day to reach his rehabilitative kindergarten in West Jerusalem, which is only 35 minutes away.** After the Israeli disability rights group Bizchut went to court in 2007, the Israeli Municipality was forced to find Muamman a place in a special school and to provide transportation. However, to save money, the municipality is subjecting the 5-year-old boy to a trip through checkpoints that is sure to exacerbate his condition and impair his recovery from the orthopedic surgery he recently underwent.

"THE MESSAGE IS CLEAR: WE ARE HERE AND WILL REMAIN HERE. THE SETTLEMENT BLOCS ARE AN INDISPUTABLE PART OF ISRAEL FOREVER. THIS IS ACCEPTABLE TO THE GREAT MAJORITY OF ISRAEL'S CITIZENS AND IS GRADUALLY BEING INSTILLED IN INTERNATIONAL CONSCIOUSNESS."

ISRAELI PRIME MINISTER NETANYAHU TO ISRAELI SETTLERS DURING A TREE-PLANTING CEREMONY IN THE OCCUPIED WEST BANK



The Apartheid Wall where it separates the Shu'fat refugee camp and the illegal settlement of Pisgat Ze'ev in East Jerusalem. Though they are cut off from the city by the Wall, the camp's residents hold Jerusalem IDs, and are bound to pay the high West Jerusalem municipality taxes. In exchange they receive almost no services. The valley below the Wall is actually so green because waste runs down the hill from the camp's homes, as many are not connected to any sewers.

Anti-Palestinian Violence

65-year-old Nadia al-Kurd was taken to the hospital on Jan 2nd after **being attacked by an Israeli settler in her own garden** in the neighborhood of Sheikh Jarrah. The settler was found and arrested in the house of the Al Ghawi family, where settlers have evicted the Palestinian family and are occupying their home

Settlers attacked Amina Nashashibi, 16, on Jan 16th in the Sheikh Jarrah neighborhood, while she was attending a demonstration against evictions of Palestinians from their homes. According to the Al Ghawi family, **the attacker belongs to the settler group now occupying their house.**

Two young Israelis were caught throwing stones at a Palestinian taxi station on Jan. 16th. Police arrived to the scene, but failed to take any actions. Attacks continued but **police failed to arrive** when called again. The station manager, a father of five, complained of **continuous harassment with clear racist undertones** by employees of the nearby Israeli taxi station, and of **another, much more serious attack a month ago.** Again police took no action.

Dozens of Israeli border guards attacked a Palestinian family on Jan 23rd in Beit Safafa, South Jerusalem, after they tried to defend their 14 year old from a border guard chasing him. Four members of the E'lieyan family were taken to the hospital and several others suffered tear-gas inhalation and minor bruising. One of the men in the family was run over by a police car. Ambulances took over an hour to arrive at the scene, and family members suspect Israeli police held them up. The family filed a complaint at the police station, which was rejected. Israeli police was near the scene, but they "turned a blind eye to what was going on" as border guards continued to assault the family.

On January 28th undercover Israeli forces raided the home of Jamal Awad, director of Shu'afat Refugee Camp's UNRWA office in East Jerusalem, using tear gas and batons to force their way in. The forces justified their attack saying they were pursuing a child, fleeing the scene of a crime that allegedly took place in the nearby illegal Israeli settlement of Pisgat Ze'ev. 5 members of the Awad family were injured in the assault, including a pregnant woman.

"ONE CANNOT DEMOLISH EVERYTHING IN ONE DAY OR EVEN ONE YEAR, AND THERE IS NO REASON TO START WITH A HOUSE INHABITED BY JEWS. IT IS BETTER TO START WITH BUILDINGS THAT ARE A BIGGER NUISANCE"

RIGHT-WING DEPUTY MAYOR DAVID HADARI ON DEMOLISHING BEIT YEHOANATAN

Settlement Expansion

On Jan. 4th the Jerusalem planning and building committee **approved construction of four new residential buildings intended to house 24 settler families on the Mount of Olives**, occupied East Jerusalem, in the internationally illegal settlement of Beit Orot.



What remains of olive trees on land belonging to the Jahalin Bedouins along Route 1, by the illegal Israeli settlement of Ma'ale Adummim East Jerusalem. The trees were cut down because the Israeli army claimed they could be used to hide snipers aiming at Israeli settlers using the road. No such incidents were ever reported, but losing any sources of income makes it even harder for the Jahalin to stay on their land. Jahalin Bedouins have been fighting a battle against the Israeli government, which has been attempting to evict them since 1967, to construct and expand Ma'ale Adummim. In 1950 the Jahalin were "encouraged" by the Israeli military to leave the Tal Arad region in northern Negev, where they had lived for generations. This would be the second time Israel displaces them and expropriates their land.

The Israeli government approved on Jan. 6th the **construction of a new Israeli settlement in the Palestinian neighborhood of Shu'fat**. The plan includes three new five-story buildings on a 5,000-meter plot of land, funded by Jewish American gambling tycoon Irving Moskowitz, the man behind private financing for many settlements currently in construction in occupied East Jerusalem.

The Israeli daily newspaper the Jerusalem News reported on Jan. 8th that **blueprints would be reviewed for a new settlement comprising 100 housing units, to be built in the Palestinian neighborhood of Ras Al-'Amoud**, East Jerusalem. The new settlement, Ma'alut David, will be near the second illegal settlement of Ma'aleh HaZeitim on the Mount of Olives.

The Wadi Hilweh Information Center, in the predominantly Palestinian neighborhood of Silwan, south of the Al-Aqsa compound, disclosed a **West Jerusalem municipality scheme to confiscate 70% of Wadi Hilweh land** on Jan. 12th.

Jewish Jerusalem's mayor Nir Barkat is defying the Israeli justice system **to save from demolition Beit Yehonatan, a Jewish-only building in the Palestinian neighborhood of Silwan**, which was built more than five years ago by the Jewish nationalist organization Ateret Cohanim **without a permit. Barkat wants to approve a posteriori permits to the Palestinian residents of Silwan to avoid having to demolish the Jewish building, an illegal move according to Israeli law.** While the Israeli State Prosecutor and the Jerusalem Attorney General ordered the mayor and the Jerusalem police to immediately evict the Jews living in Beit Yehonatan, the municipality does not intend to have the order enforced.

**"ALL POSSIBLE LINES WERE ALREADY
CROSSED A LONG TIME AGO WITH
REGARD TO HONORING AND
OBEYING COURT ORDERS."**

STATE PROSECUTOR MOSHE LADOR REPRIMANDING JERUSALEM
MAYOR BARKAT ON THE ISSUE OF BEIT YEHOANATAN

**"WE WILL BUILD HERE AS PART OF
GREATER JERUSALEM. I CAME HERE
FROM GUSH ETZYON, WHICH IS
JERUSALEM'S SOUTHERN GATE.
NOW WE'RE IN MA'ALE ADUMMIM,
WHICH IS JERUSALEM'S EASTERN
GATE."**

ISRAELI PRIME MINISTER NETANYAHU TO ISRAELI SETTLERS IN
THE ILLEGAL SETTLEMENT OF MA'ALE ADUMMIM, OCCUPIED
WEST BANK.

The settlement expansions reported this month are **in addition to the plans for 2,105 settlement housing units in East Jerusalem** announced by the Israeli government in November 2009, and in addition to **the 14,000 new settlement-housing units in East Jerusalem on which construction commenced in November.**

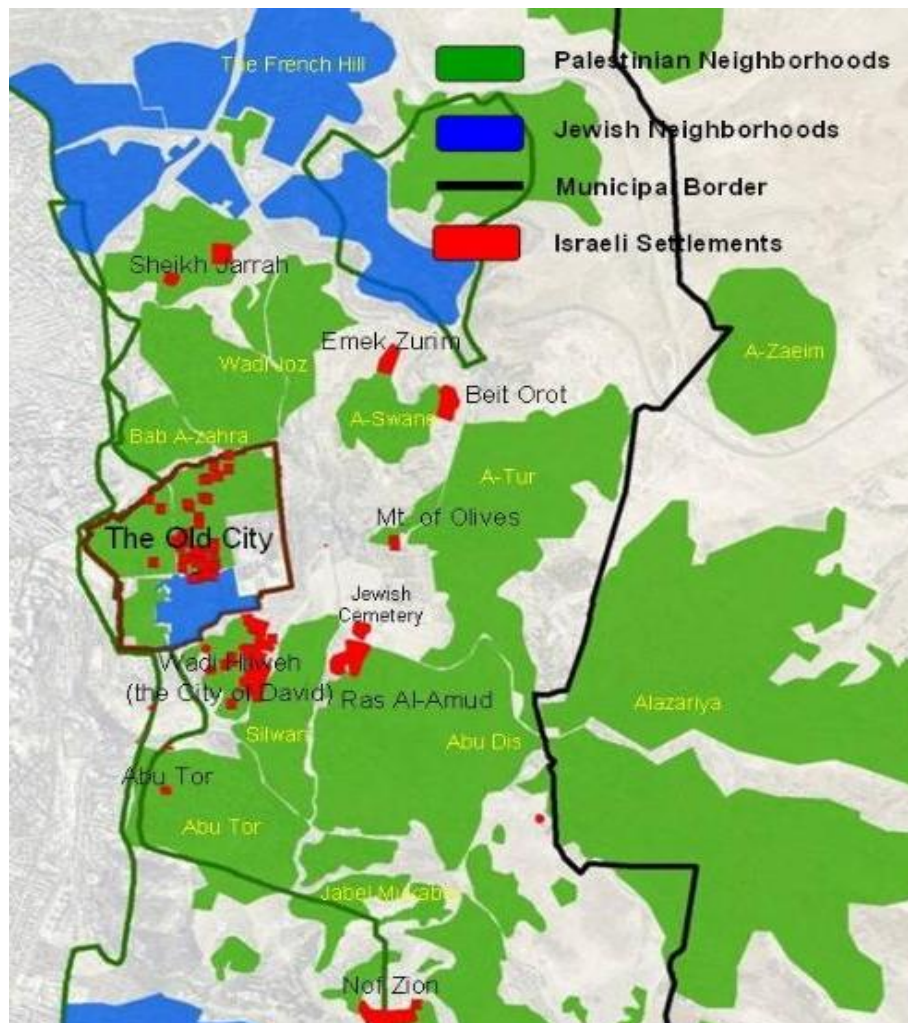
Out of a total of approximately 470,000 settlers in the occupied Palestinian territory, **40% - or 190,000 - are currently living in East Jerusalem**, with another 96,000 in settlements around Jerusalem. Recent Peace Now calculations have shown that **almost 2,000 settlers now live in outposts in the heart of the Palestinian neighborhoods of East Jerusalem.**

Al Aqsa Mosque – Haram al Sharif

The Al-Aqsa Foundation for Endowment and Heritage reported on Jan. 2nd **a collapse in the main road in Wad Hilweh, Silwan, south of Jerusalem's Old City. The collapse was due to Israeli excavations in the area** apparently on tunnels extending underneath the neighborhood about 700 meters from the Al-Aqsa Mosque compound. The collapse threatens a neighboring kindergarten and a community center. **The same road collapsed again** on Jan. 18th, a few meters from the previous cave in, creating a wider, 12-meter square hole in the middle of Wadi Hilweh Street, over a 10-meter deep tunnel. **A child was injured and a vehicle fell into the site**, while the local Al-Ein mosque, where Israeli excavation has intensified, was flooded as rainwater seeped into the collapsed site. The Al-Quds Centre for Economic and Social rights said that this incident follows a number of similar collapses in Silwan recently: **last year a collapse occurred in a girls' school, injuring 17 students.**

Sheikh Tayseer Tamimi, chief Islamic Judge for the Palestinian Authority, sounded the alarm on Jan. 19th about **cracks and fissures in the walls of the Al Aqsa Mosque, a sign of its impending collapse, as a result of Israeli excavations below it.** He further spoke of Israeli military intrusions into the compound. Temple Mount Trustees Movement is one of the most active **Jewish settlers organizations calling for demolition of the Al Aqsa Mosque.** The movement's members entered the mosque's grounds several times to perform Jewish prayers and rituals.

The Al Aqsa Mosque is the most sensitive site in all of the occupied territory. It is the heart of the Old City of Jerusalem, the third holiest place for the Muslim world. It was a provocative visit by General Sharon to the mosque in 2000 that sparked the Al Aqsa Intifada.



Central portion of occupied East Jerusalem. On the left side the Green Line, the armistice line of 1949 where the future border between Israel and Palestine should be; in blue and red illegal Israeli settlements in the future capital of Palestine; in black, on the right side, the Israeli-drawn Jerusalem municipal boundaries.

(source: Settlement-Watch, a Peace Now project)

JANUARY 2010

ISSUE 3

MONITORING JERUSALEM

A monthly situation report of the Occupation of East Jerusalem and the human rights violations caused by the Israeli policy of ethnic cleansing of East Jerusalem's Palestinian residents.

Monitoring Jerusalem is compiled from the most reliable sources available, including UN updates, several different news agencies and information from other organizations active in East Jerusalem.

The Jerusalem Center for Women (JCW) is a Palestinian non-governmental women's center located in East Jerusalem and established in March 1994. JCW is committed to advancing the rights of women and developing their role in civil society, nation building and the decision-making process.

JCW is currently focusing on rights violations occurring in occupied East Jerusalem and on bringing the city's status at the top of the international agenda.

ph +972-2-6568532 Jerusalem, Palestine
ph +972-2-6568534 Isbeh Building
fx +972-2-6568291 Beit Hanina, Main Street
mo pr@j-c-w.org

www.j-c-w.org

مركز القدس للنساء
Jerusalem Center for
Women

